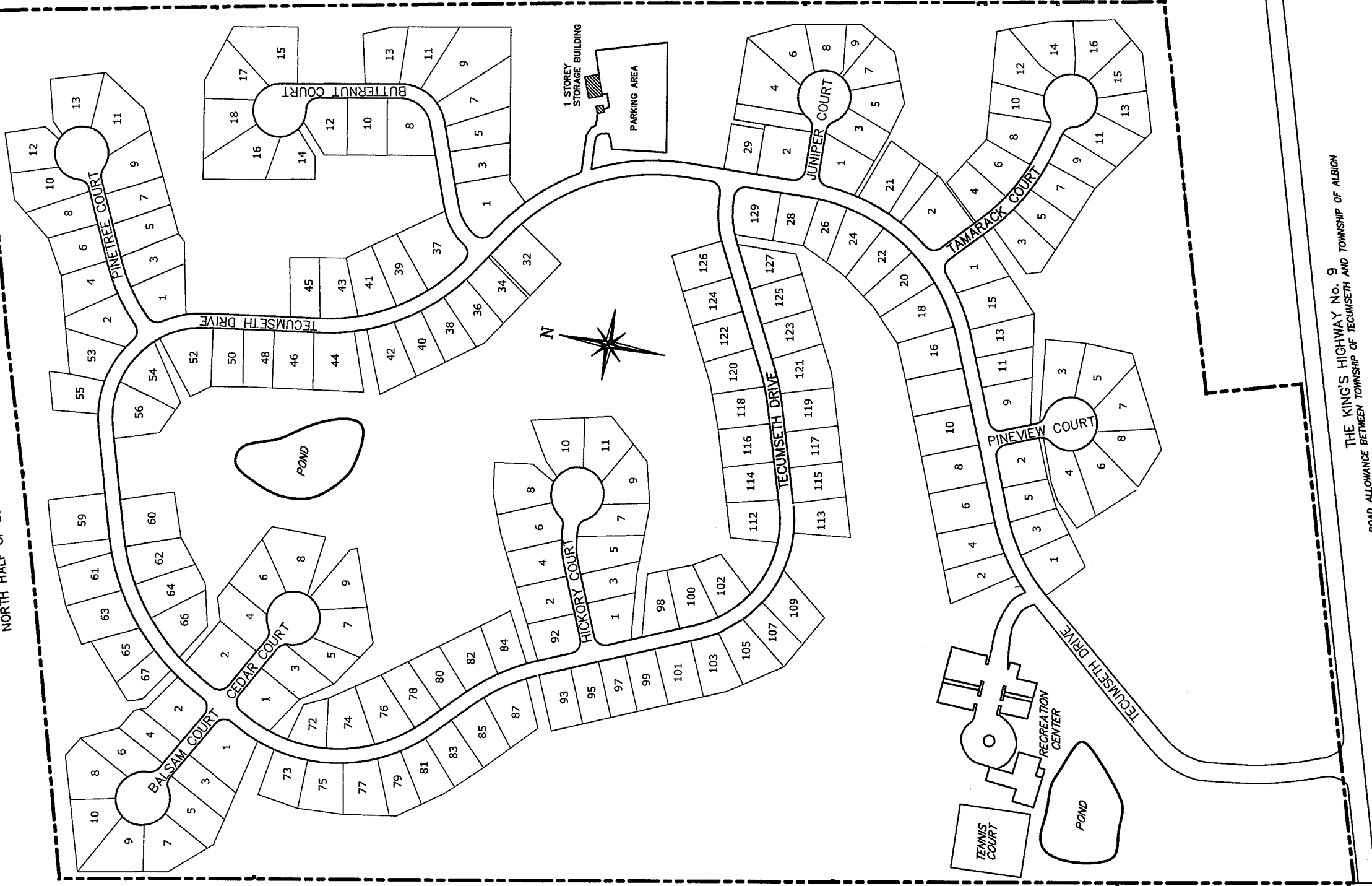
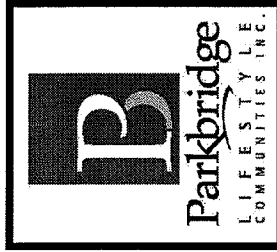


NORTH HALF OF LOT 7, CONCESSION 1



THE KING'S HIGHWAY No. 9
ROAD ALLOWANCE BETWEEN TOWNSHIP OF TECUMSETH AND TOWNSHIP OF ALBION



TECUMSETH PINES

TOWN OF NEW TECUMSETH, ONTARIO